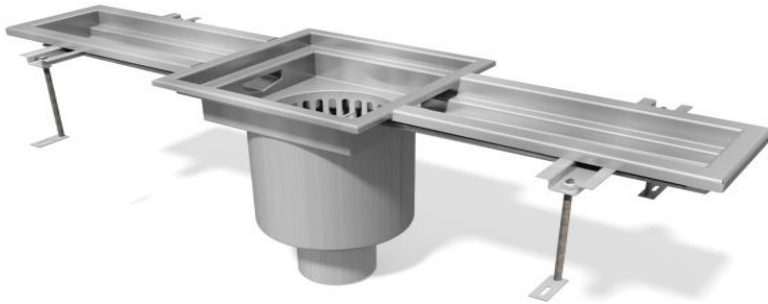
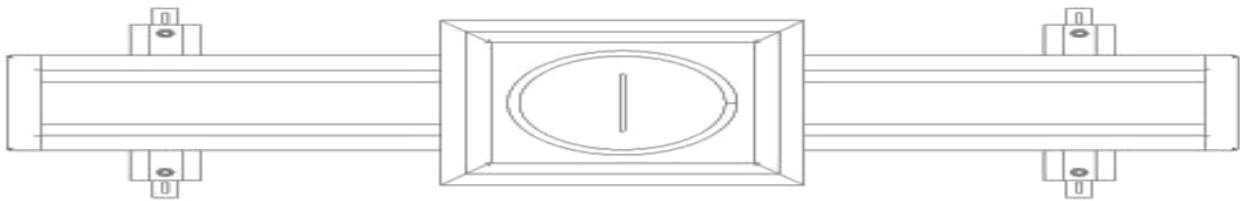


PRODUCT CARD

Sewers

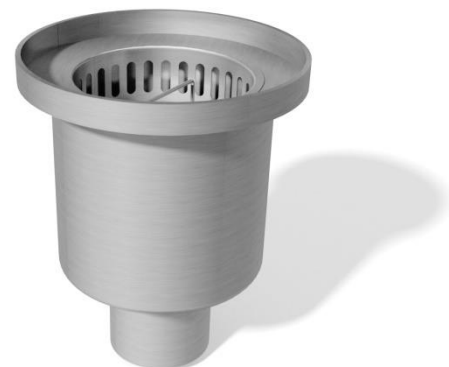


The sewer KV-170, made of stainless steel 1.4301, provides drainage for the production facilities as well as from the surfaces located outside. The sewer features standard drop of 1.5% and the width of 76mm. Thanks to the fact the bottom of the sewer is V-shaped the amount of standing water is minimized and the hygiene of usage improved. Rims of the sewer are reinforced with flat bars to protect them from damage.

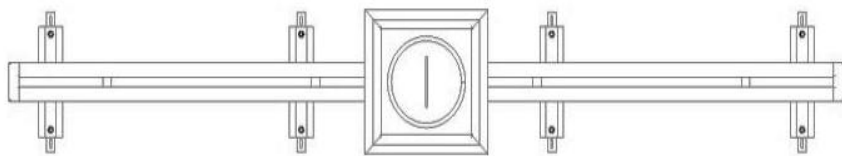


A drain inlet with side or bottom drainage is integrated with the sewer. The sewer features assembly rods allowing it to be steadfastly embedded in the floor, moreover, adjustable mounting shoes allow for positioning of the sewer before laying the floor. The sewer can be manufactured in segments. In order to facilitate transportation and assembly, the segments are provided with screwed flanges. Other sizes and configurations are available upon request.

Due to its construction it does not require the use of lids and its specific cross-section helps to maintain its cleanness.



Other configurations, sizes to order. Welcome!



The slot gutter type KS-60, made of stainless steel 1.4301, provides drainage for the production facilities as well as from the surfaces located outside. The sewer features standard drop of 1.5% and the width of 20mm. Due to its construction does not require the use of a special cross-section of the cover helps to keep it clean.

Rims of the sewer are reinforced with flat bars to protect them from damage.



A drain inlet with side or bottom outlet is integrated with the sewer. The sewer features assembly rods allowing it to be steadfastly embedded in the floor, moreover, adjustable mounting shoes allow for positioning of the sewer before laying the floor. The sewer can be manufactured in segments. In order to facilitate transportation and assembly, the segments are provided with screwed flanges. Other sizes and configurations are available upon request.



Other configurations, sizes to order. Welcome!

WIBO-BT Monika Bober-Kuchta

ul. Kolejowa 20
13-124 Kozłowo k. Nidzicy
Poland

telefony/ phone numbers:

sekretariat / office: +48 89 626 75 09
dział handlu / sales: +48 89 626 76 76
+48 604 271 805, +48 606 839 232,
+48 506 199 472, +48 668 039 281

fax: +48 89 626 75 00

www.wibo-bt.com.pl

mail: poczta@wibo-bt.com.pl

